



G&W Laboratories, Inc.
111 Coolidge St.
South Plainfield, NJ 07080
Tel: (800) 922-1038
Fax: (908) 753-5174
Web: www.gwllabs.com
E-mail: sales@gwllabs.com

Vital Statistics

Year Founded: 1919

Number of Employees: 350

Key Personnel: Burton Greenblatt, chairman and chief executive officer; Ronald Greenblatt, president and chief operating officer; Joel Zaklin, vice president, sales & marketing; Dana Hughes, Manager of Contract Manufacturing.

Who We Are

CARL GREENBLATT FOUNDED G&W Laboratories, Inc. over 80 years ago upon his return from World War I. While establishing a reputation as an innovative specialist in suppository dosage forms, Carl guided G&W Laboratories with an uncompromising commitment to product integrity and customer service.



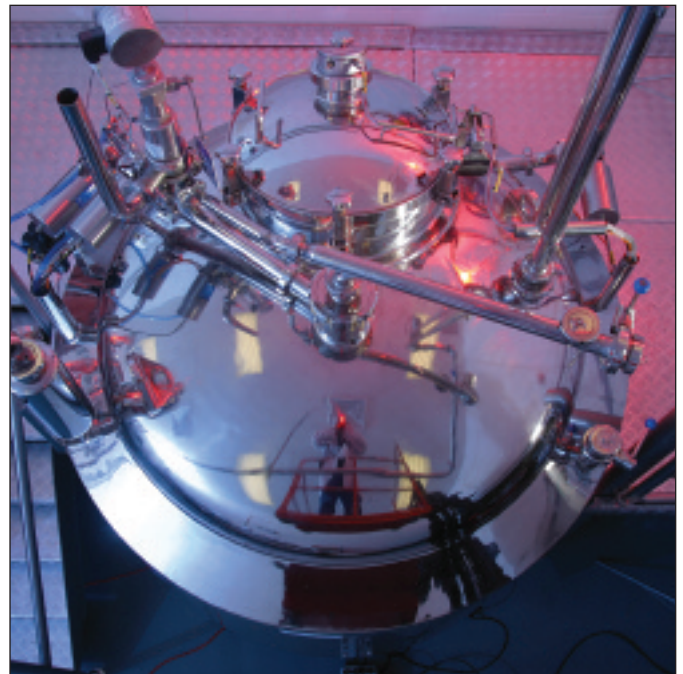
Our facilities now exceed 180,000 square feet in South Plainfield, New Jersey. Today we are a leading manufacturing company still known for quality products, on time delivery and products that are fairly priced. When you look past the

sophisticated technology, modern buildings and breadth of product, you will note that the character and qualities that were there when G&W Laboratories began are still there today.

Major Markets

G&W LABORATORIES PROVIDES Contract Manufacturing Services from development to marketing of products with other companies who require a reliable outsource partner. G&W Laboratories develops, manufactures and markets Rx and OTC specialty pharmaceuticals. G&W is the established industry leader of generic and branded suppositories and is also a widely respected manufacturer of creams, ointments, nasal sprays and gel dosage forms.

- Product Formulation



Services Offered

- Process Development
- Analytical Services
- Stability Monitoring
- Validations
- Regulatory Services
- Quality Assurance Services
- Commercial Manufacturing
- Clinical Trial Product Supplies

www.gwllabs.com

